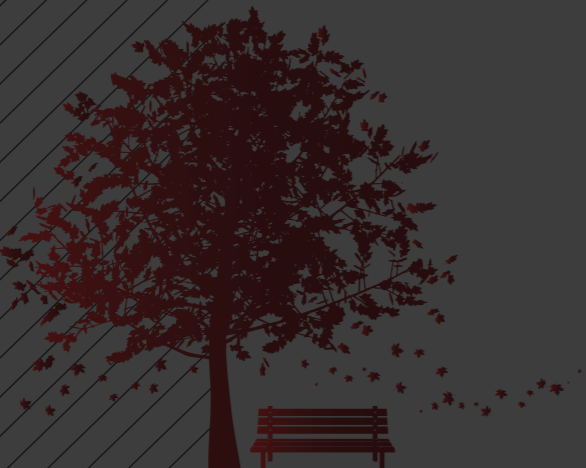



Township of Guelph/Eramosa


Memorial Tree and Bench Program

Honour the Memory of a Loved One in a Beautiful Way.



 get.on.ca/tree-and-bench-program

 parks@get.on.ca

 519-856-9596 x 113



All donation requests and questions can be sent to
parks@get.on.ca or 519-856-9596 x 113

The Township of Guelph/Eramosa is pleased to offer the Memorial Tree and Bench program, allowing residents the unique opportunity to have a tree or bench placed in one of the Townships many parks, green spaces and facilities, to celebrate the life of a loved one.

Your tree will serve as a living legacy that will enhance our park's beauty and provide many beneficial ecological services over the course of its lifetime. Your bench will become a place to rest, enjoy a conversation with friends and benefit the entire community.

Memorial Bench Details

The Township's memorial benches are 6' long made out of recycled plastic slats, mounted on 2" black powder coated steel and installed on an 8'x4' concrete pad. Each bench is memorialized with a bronze 2"x12" bronze plaque with your custom inscription.

Memorial Tree Details

The Townships memorial trees are a minimum of 45mm in diameter. Each tree is memorialized at the base of the tree with a 4"x6" cast aluminum plaque with your custom inscription.

Dedication Location

Location selection for benches and trees is at the discretion of the purchaser with approval of the Townships parks and recreation staff. To view the current staff recommendations go to

get.on.ca/tree-and-bench-program

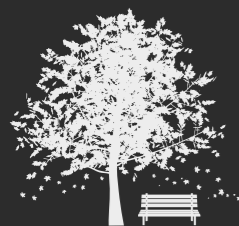


A LIVING TRIBUTE



Marden Park

A meaningful way to celebrate and remember an event or loved one.



Bench Cost \$2,665.00

The cost includes bench, bronze memorial plaque, cement pad, installation and on going maintenance.

Tree Cost \$753.00

The cost includes a tree minimum of 45mm in diameter, cast aluminum memorial plaque, installation and on going maintenance.

The Township of Guelph/Eramosa is responsible for the installation of your gift. All donated trees and benches become the property of the Township of Guelph/Eramosa and are subject to removal or relocation. There may be extended lead time between purchase and installation of trees and benches dependant on stock, delivery time and weather conditions.